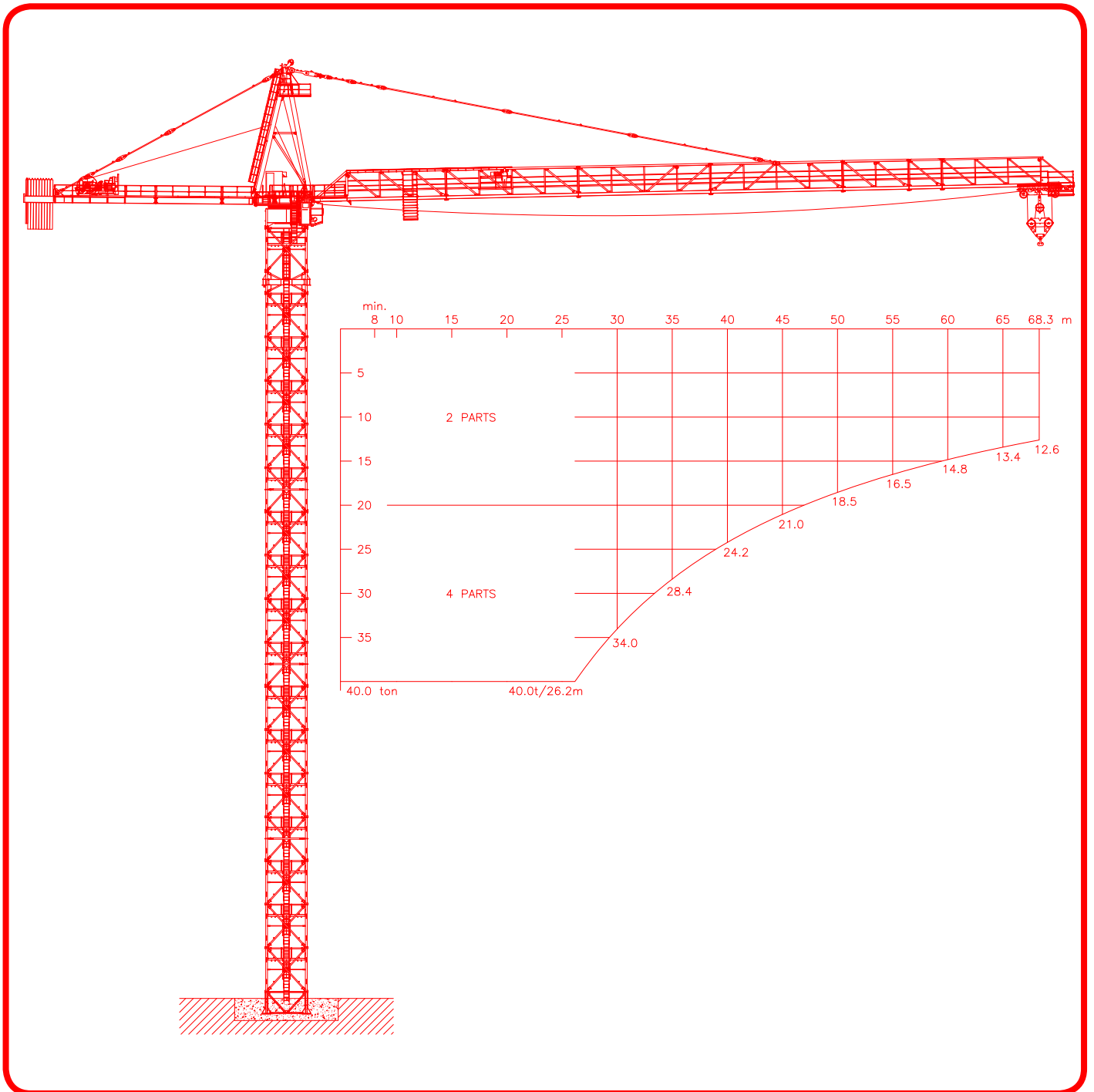




KRØLL CRANES

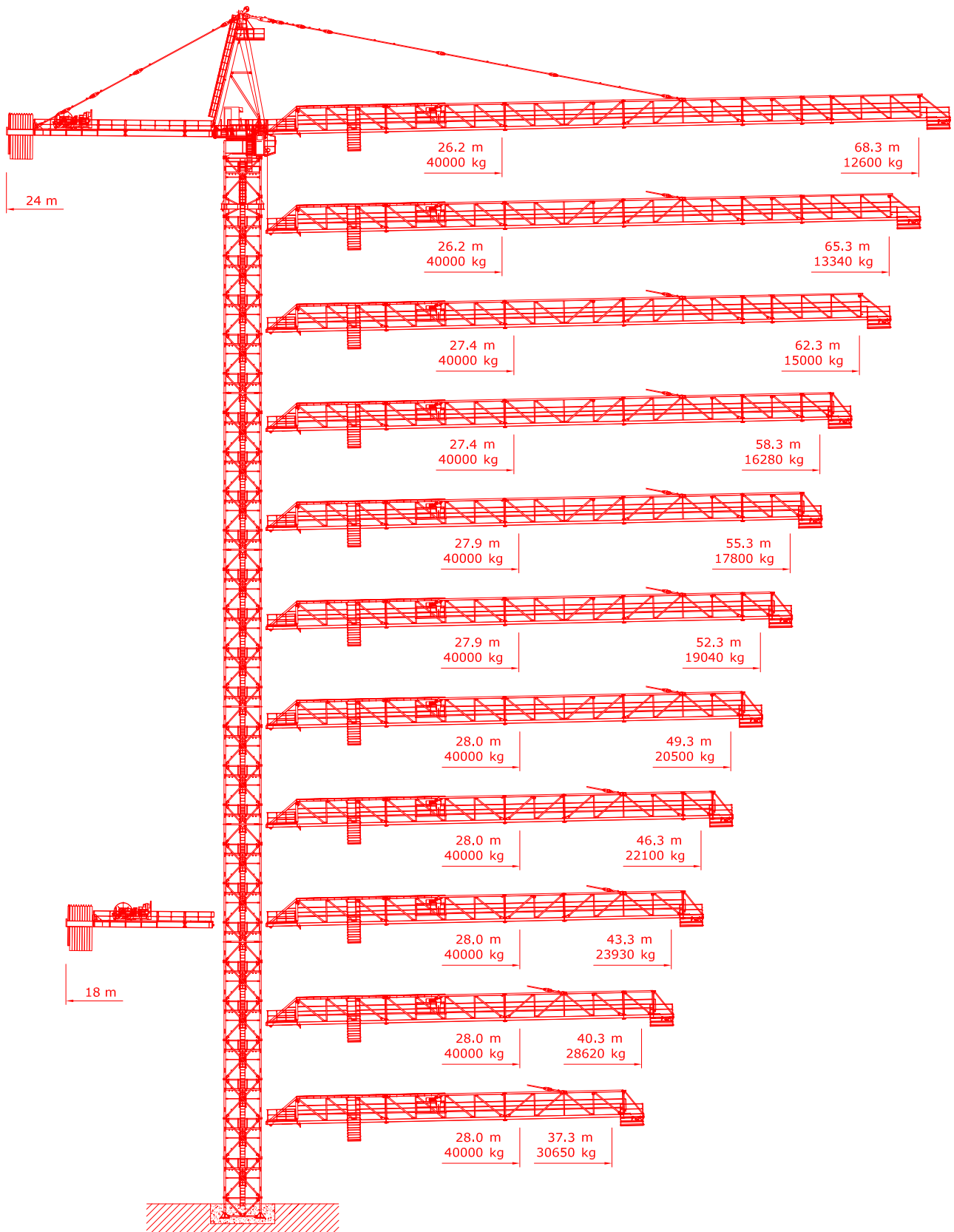


F.E.M 1.001-HC1/A3/E3



HIGH TOP TOWER CRANE **K1000** 40 tonnes Max



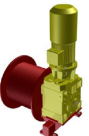

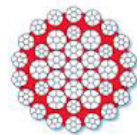
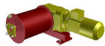

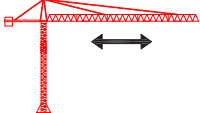


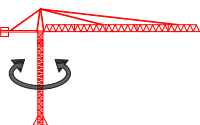


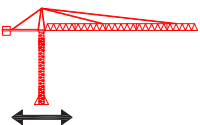
JIB CONFIGURATIONS

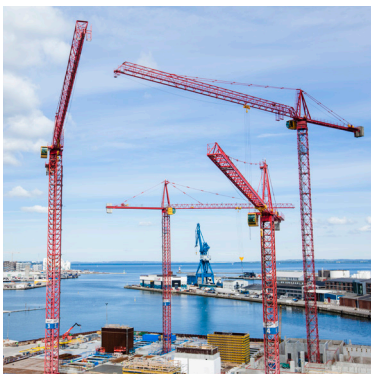




LOAD CHARTS

Radius	Jib Length																					
	68.3 m		65.3 m		62.3 m		58.3 m		55.3 m		52.3 m		49.3 m		46.3 m		43.3 m		40.3 m		37.3 m	
	4 parts	2 parts	4 parts	2 parts	4 parts	2 parts	4 parts	2 parts	4 parts	2 parts	4 parts	2 parts	4 parts	2 parts	4 parts	2 parts	4 parts	2 parts	4 parts	2 parts	4 parts	2 parts
[m]	[kg]	[kg]	[kg]	[kg]	[kg]	[kg]	[kg]	[kg]	[kg]	[kg]	[kg]	[kg]	[kg]	[kg]	[kg]	[kg]	[kg]	[kg]	[kg]	[kg]	[kg]	[kg]
17.0	40,000	20,000	40,000	20,000	40,000	20,000	40,000	20,000	40,000	20,000	40,000	20,000	40,000	20,000	40,000	20,000	40,000	20,000	40,000	20,000	40,000	20,000
18.0	40,000	20,000	40,000	20,000	40,000	20,000	40,000	20,000	40,000	20,000	40,000	20,000	40,000	20,000	40,000	20,000	40,000	20,000	40,000	20,000	40,000	20,000
19.0	40,000	20,000	40,000	20,000	40,000	20,000	40,000	20,000	40,000	20,000	40,000	20,000	40,000	20,000	40,000	20,000	40,000	20,000	40,000	20,000	40,000	20,000
20.0	40,000	20,000	40,000	20,000	40,000	20,000	40,000	20,000	40,000	20,000	40,000	20,000	40,000	20,000	40,000	20,000	40,000	20,000	40,000	20,000	40,000	20,000
21.0	40,000	20,000	40,000	20,000	40,000	20,000	40,000	20,000	40,000	20,000	40,000	20,000	40,000	20,000	40,000	20,000	40,000	20,000	40,000	20,000	40,000	20,000
22.0	40,000	20,000	40,000	20,000	40,000	20,000	40,000	20,000	40,000	20,000	40,000	20,000	40,000	20,000	40,000	20,000	40,000	20,000	40,000	20,000	40,000	20,000
23.0	40,000	20,000	40,000	20,000	40,000	20,000	40,000	20,000	40,000	20,000	40,000	20,000	40,000	20,000	40,000	20,000	40,000	20,000	40,000	20,000	40,000	20,000
24.0	40,000	20,000	40,000	20,000	40,000	20,000	40,000	20,000	40,000	20,000	40,000	20,000	40,000	20,000	40,000	20,000	40,000	20,000	40,000	20,000	40,000	20,000
25.0	40,000	20,000	40,000	20,000	40,000	20,000	40,000	20,000	40,000	20,000	40,000	20,000	40,000	20,000	40,000	20,000	40,000	20,000	40,000	20,000	40,000	20,000
26.0	40,000	20,000	40,000	20,000	40,000	20,000	40,000	20,000	40,000	20,000	40,000	20,000	40,000	20,000	40,000	20,000	40,000	20,000	40,000	20,000	40,000	20,000
27.0	38,560	20,000	38,560	20,000	40,000	20,000	40,000	20,000	40,000	20,000	40,000	20,000	40,000	20,000	40,000	20,000	40,000	20,000	40,000	20,000	40,000	20,000
28.0	36,940	20,000	36,940	20,000	38,940	20,000	38,940	20,000	39,850	20,000	39,850	20,000	39,960	20,000	39,960	20,000	39,970	20,000	40,000	20,000	40,000	20,000
29.0	35,440	20,000	35,440	20,000	37,370	20,000	37,370	20,000	38,240	20,000	38,240	20,000	38,350	20,000	38,350	20,000	38,350	20,000	38,680	20,000	38,680	20,000
30.0	34,050	20,000	34,050	20,000	35,910	20,000	35,910	20,000	36,750	20,000	36,750	20,000	36,850	20,000	36,850	20,000	36,860	20,000	37,460	20,000	37,460	20,000
31.0	32,760	20,000	32,750	20,000	34,550	20,000	34,550	20,000	35,360	20,000	35,360	20,000	35,460	20,000	35,460	20,000	35,470	20,000	36,320	20,000	36,320	20,000
32.0	31,550	20,000	31,550	20,000	33,280	20,000	33,280	20,000	34,070	20,000	34,070	20,000	34,160	20,000	34,160	20,000	34,170	20,000	35,260	20,000	35,250	20,000
33.0	30,420	20,000	30,420	20,000	32,100	20,000	32,100	20,000	32,860	20,000	32,860	20,000	32,950	20,000	32,950	20,000	32,960	20,000	34,270	20,000	34,260	20,000
34.0	29,370	20,000	29,370	20,000	30,990	20,000	30,990	20,000	31,730	20,000	31,730	20,000	31,820	20,000	31,820	20,000	31,820	20,000	33,340	20,000	33,330	20,000
35.0	28,380	20,000	28,380	20,000	29,950	20,000	29,950	20,000	30,670	20,000	30,670	20,000	30,750	20,000	30,750	20,000	30,760	20,000	32,470	20,000	32,460	20,000
36.0	27,450	20,000	27,450	20,000	28,970	20,000	28,970	20,000	29,670	20,000	29,670	20,000	29,750	20,000	29,750	20,000	29,750	20,000	31,650	20,000	31,640	20,000
37.0	26,570	20,000	26,570	20,000	28,050	20,000	28,050	20,000	28,730	20,000	28,730	20,000	28,810	20,000	28,810	20,000	28,810	20,000	30,870	20,000	30,870	20,000
37.3	26,320	20,000	26,320	20,000	27,790	20,000	27,790	20,000	28,460	20,000	28,460	20,000	28,530	20,000	28,530	20,000	28,540	20,000	30,650	20,000	30,650	20,000
38.0	25,740	20,000	25,740	20,000	27,180	20,000	27,180	20,000	27,840	20,000	27,840	20,000	27,920	20,000	27,920	20,000	27,920	20,000	30,140	20,000	30,140	20,000
39.0	24,960	20,000	24,960	20,000	26,360	20,000	26,360	20,000	27,000	20,000	27,000	20,000	27,080	20,000	27,080	20,000	27,080	20,000	29,460	20,000	29,460	20,000
40.0	24,220	20,000	24,220	20,000	25,590	20,000	25,580	20,000	26,200	20,000	26,200	20,000	26,280	20,000	26,280	20,000	26,280	20,000	28,800	20,000	28,800	20,000
40.3	24,010	20,000	24,010	20,000	25,360	20,000	25,360	20,000	25,970	20,000	25,970	20,000	26,050	20,000	26,050	20,000	26,050	20,000	28,620	20,000	28,620	20,000
41.0	23,520	20,000	23,520	20,000	24,850	20,000	24,850	20,000	25,450	20,000	25,450	20,000	25,520	20,000	25,520	20,000	25,520	20,000	28,530	20,000	28,530	20,000
42.0	22,850	20,000	22,850	20,000	24,150	20,000	24,150	20,000	24,740	20,000	24,740	20,000	24,810	20,000	24,810	20,000	24,810	20,000	28,410	20,000	28,410	20,000
43.0	22,220	20,000	22,220	20,000	23,480	20,000	23,480	20,000	24,060	20,000	24,060	20,000	24,120	20,000	24,120	20,000	24,120	20,000	28,290	20,000	28,290	20,000
43.3	22,040	20,000	22,040	20,000	23,290	20,000	23,290	20,000	23,860	20,000	23,860	20,000	23,930	20,000	23,930	20,000	23,930	20,000	28,170	20,000	28,170	20,000
44.0	21,620	20,000	21,620	20,000	22,850	20,000	22,850	20,000	23,410	20,000	23,410	20,000	23,480	20,000	23,480	20,000	23,480	20,000	28,050	20,000	28,050	20,000
45.0	21,040	20,000	21,040	20,000	22,250	20,000	22,240	20,000	22,790	20,000	22,790	20,000	22,860	20,000	22,860	20,000	22,860	20,000	27,910	20,000	27,910	20,000
46.0	20,490	20,000	20,490	20,000	21,670	20,000	21,670	20,000	22,200	20,000	22,200	20,000	22,270	20,000	22,270	20,000	22,270	20,000	27,770	20,000	27,770	20,000
46.3	20,340	20,000	20,330	20,000	21,500	20,000	21,500	20,000	22,030	20,000	22,030	20,000	22,100	20,000	22,100	20,000	22,100	20,000	27,630	20,000	27,630	20,000
47.0	19,970	19,970	19,970	19,970	21,120	20,000	21,120	20,000	21,640	20,000	21,640	20,000	21,700	20,000	21,700	20,000	21,700	20,000	27,490	20,000	27,490	20,000
48.0	19,470	19,470	19,470	19,470	20,590	20,000	20,590	20,000	21,110	20,000	21,110	20,000	21,170	20,000	21,170	20,000	21,170	20,000	27,350	20,000	27,350	20,000
49.0	18,990	18,990	18,990	18,990	20,090	20,000	20,090	20,000	20,590	20,000	20,590	20,000	20,650	20,000	20,650	20,000	20,650	20,000	27,210	20,000	27,210	20,000
49.3	18,850	18,850	18,850	18,850	19,940	19,940	19,940	19,940	20,440	20,000	20,440	20,000	20,500	20,000	20,500	20,000	20,500	20,000	27,070	20,000	27,070	20,000
50.0	18,530	18,530	18,530	18,530	19,610	19,610	19,610	19,610	20,100	20,000	20,100	20,000	20,160	20,000	20,160	20,000	20,160	20,000	26,930	20,000	26,930	20,000
51.0	18,090	18,090	18,090	18,090	19,150	19,150	19,150	19,150	19,630	19,630	19,630	19,630	19,690	19,630	19,690	19,630	19,690	19,630	26,790	20,000	26,790	20,000
52.0	17,670	17,670	17,670	17,670	18,700	18,700	18,700	18,700	19,170	19,170	19,170	19,170	19,230	19,170	19,230	19,170	19,230	19,170	26,650	20,000	26,650	20,000
52.3	17,550	17,550	17,550	17,550	18,570	18,570	18,570	18,570	19,040	19,040	19,040	19,040	19,100	19,040	19,100	19,040	19,100	19,040	26,510	20,000	26,510	20,000
53.0	17,270	17,270	17,260	17,260	18,280	18,280	18,280	18,280	18,740	18,740	18,740	18,740	18,800	18,740	18,800	18,740	18,800	18,740	26,370	20,000	26,370	20,000
54.0	16,880	16,880	16,880	16,880	17,870	17,870	17,870	17,870	18,320	18,320	18,320	18,320	18,380	18,320	18,380	18,320	18,380	18,320	26,230	20,000	26,230	20,000
55.0	16,500	16,500	16,500	16,500	17,480	17,480	17,470	17,470	17,920	17,920	17,920	17,920	17,980	17,920	17,980	17,920	17,980	17,920	26,090	20,000	26,090	20,000
55.3	16,390	16,390	16,390	16,390	17,360	17,360	17,360	17,360	17,800	17,800	17,800	17,800	17,860	17,800	17,860	17,8						

HOIST WINCH MOTOR 160 kW	2-PARTS		4-PARTS		
					
	Load	Max. Speed	Load	Max. Speed	
	0 - 2 t 2 - 4 t 4 - 12 t 12 - 20 t	140 m/min 80 m/min 60 m/min 40 m/min	0 - 4 t 4 - 8 t 8 - 24 t 24 - 40 t	70 m/min 40 m/min 30 m/min 20 m/min	
	HOIST DRUM			HOIST WIRE	
	CAPACITY 690 m / 5 layers			Diameter	24 mm
			Safety Factor	4.5	
			MBL	512 kN	
	TROLLEY WINCH			TROLLEY DRUM	
	MOTOR 22 kW			CAPACITY 60 m / 1 Layer	
TROLLEY SPEEDS			TROLLEY WIRE		
	0 - 40 t	0 - 70 m/min	Diameter	15 mm	
			Safety Factor	7	
			MBL	175 kN	
	SLEW DRIVE			POWER	
	Motor 3 x 10.5 kW			SUPPLY 3 x 400-460 V, 50/60 Hz	
SLEW SPEEDS			Consumption	200 kVA	
	0 - 40 t	0 - 0.6 rpm	Main Fuse	250 A	
			Recommended Generator Size	500 kVA	
	UNDERCARRIAGE			SUPPLY CABLE	
	Motor tba			Cable Length	Cable Type
TRAVEL SPEEDS			0 - 250 m	4 x 95 mm ²	
	0 - 40 t	0 - 20 m/min			
<p>All motion controls are completely stepless ensuring smooth and jerk-free operation. Creeping speed down to 0.5% of maximum speed.</p>			<p>All specifications shown in the tables are for the standard version of K1000. For special requirements regarding load charts or drive speeds, please contact Krøll Cranes A/S.</p>		



KRØLL CRANES A/S
Nordkranvej 2
DK-3540 Lyngø
Denmark

Tel: +45 48 18 74 00
Mail: info@krollcranes.dk
Web: www.krollcranes.dk

